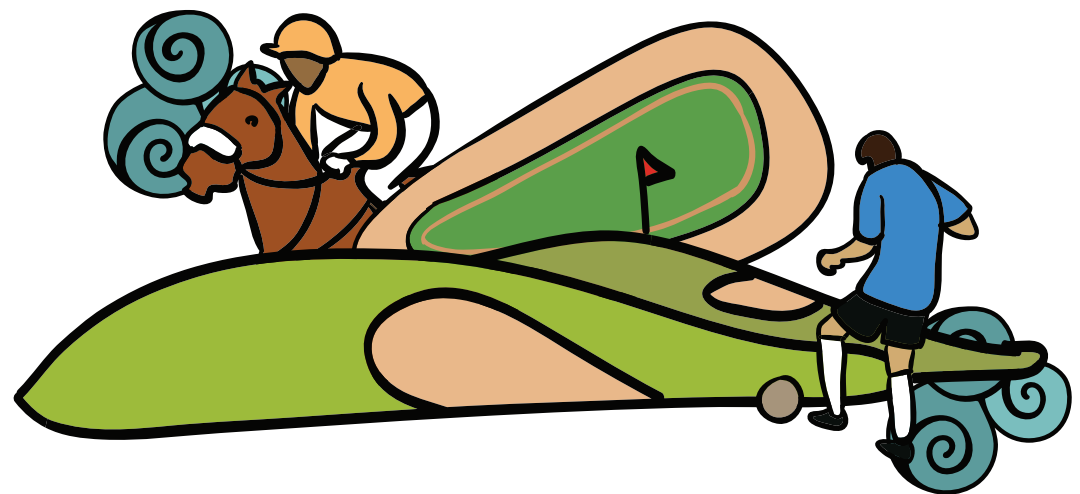


Locales in this category have hosted shoots of prominent films such as

**Kaminey, Jodhaa Akbar,
Bombay Race Course, Khiladi,
Khakee and Hero**

**Award shows and concerts
are also held regularly in two of the
locales in this category**

Sports Facilities

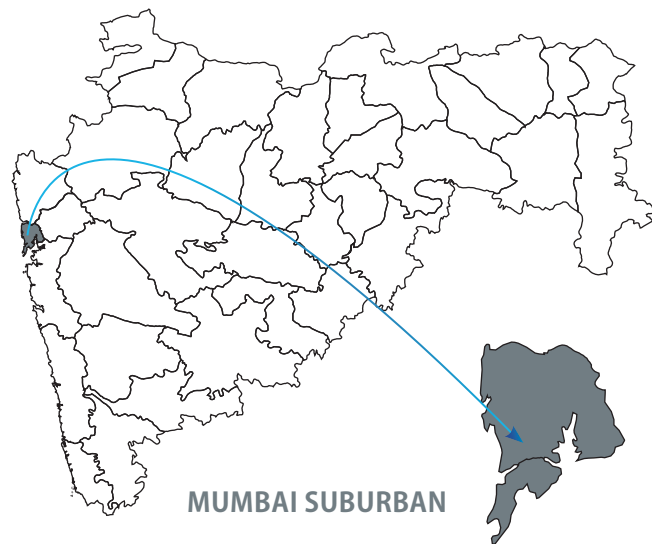




ANDHERI SPORTS COMPLEX – MULTI-SPORTS FACILITY

The Andheri Sports Complex is a multipurpose facility located on Veera Desai Road in Andheri (West) in Mumbai. The complex has an Olympic-size swimming pool with four levels of diving and a modern football stadium which played host to the Football Sports League.

It offers amazing infrastructure such as a cricket stadium, football stadium, swimming pool, badminton and squash courts, sports training centre, multipurpose, gymnastic and lecture halls, auditoriums, open-air theatres and hostels with 28 fully air-conditioned rooms and 28 non air-conditioned rooms.



LOCATION FACT FILE

- Andheri Sports Complex is in Mumbai Suburban district which has an average high temperature of 38 degree Celsius and a low of 18 degree Celsius.
- Local transportation is easily available. The complex is connected by rail (Andheri, Mumbai, 1 km; Mumbai Central, 25 km) and air (Mumbai, 6.5 km).
- Nearby attractions include Mahakali Caves, Versova Beach, Juhu Beach, ISKCON Temple, etc.
- Several luxury, star and budget category hotels are available across Mumbai.
- Catering facilities and restaurants offering various kinds of cuisines are also available in plenty.
- Mumbai has good medical facilities as well as speciality hospitals.
- Mumbai being the hub of cinema has ample support infrastructure in terms of pre- and post-production equipment, artistes, technicians, etc.
- *Khiladi, Khakee, Hero* are among the films that were shot here. Awards shows and concerts are also regularly organised in the complex.

PERMISSION AND FEE DETAILS

AUTHORITY

Brihan Mumbai Kreedha Ani Lalitkala Pratishthan

CONTACT DETAILS

Complex In-charge

Shahaji Raje Bhosale Kreedha Sankul

(Andheri Sports Complex), Jaiprakash Road

Munshi Nagar, Andheri (West)

Mumbai, Maharashtra – 400058

Tel: +91-22-26744266/ 26744989/ 26743556/ 26740035

Web: www.bklp.mcgm.gov.in

FEE (INR)

Fee is decided by the Board on the basis of the application

AUTHORITY

Police Department

CONTACT DETAILS

Senior Police Inspector, Theatre Branch

Desk 10, Police Commissioner's Office, Dr D N Road

Fort, Opposite Crawford Market

Mumbai, Maharashtra – 400001

Tel: +91-22-22620111

Web: www.mumbaipolice.maharashtra.gov.in

FEE (INR)

Police protection charges as applicable, depending on the number of personnel deployed

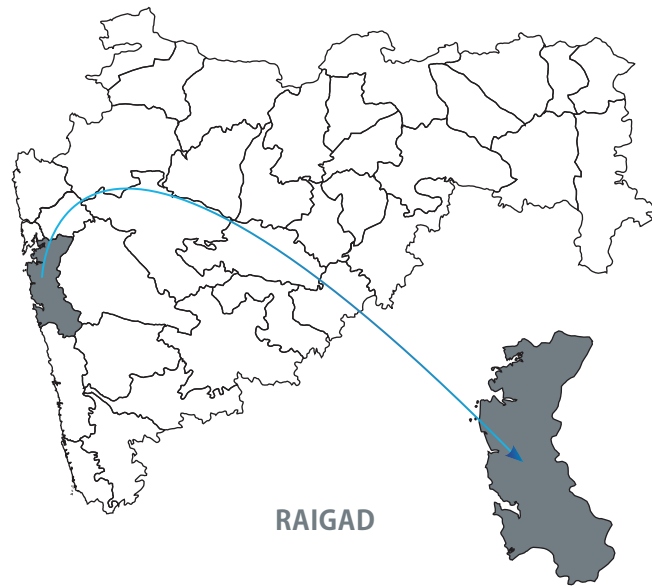




KHARGHAR GOLF COURSE – GREENLAND AND WATERFALL

The Kharghar Valley Golf Course is nestled in the foothills of the Kharghar mountain range. The course with an 18-hole (currently 9 are in operation), 7,137 yard and Par 72 layout provides a spectacular backdrop for films.

A club house, golf academy, driving range, pro shop, practice facilities, hotels and residential villas form part of the golf course complex. During monsoons the course transforms into a cinematic treat with the waters of the Pandav waterfall flowing down the cliff and forming a rock pool.



LOCATION FACT FILE

- The Kharghar Valley Golf Course (CIDCO) is located just off the Mumbai-Pune Highway (NH-4) and is less than an hour's drive from the heart of Mumbai city.
- Raigad, the district in which it is situated, has an average maximum temperature of 38 degree Celsius and a minimum of 12 degree Celsius.
- It is connected by rail (Kharghar, 3.3 km), air (Mumbai, 29.1 km) and road (Mumbai, 32.6 km; Pune, 123 km).
- Nearby attractions include Central Park, Bawkhaleshwar Temple, Pandavkada Falls, D Y Patil Stadium, etc.
- Several star and budget hotels are available in Navi Mumbai. Mumbai is the closest, with plenty of support infrastructure in terms of pre- and post-production equipment, artistes, technicians, etc.
- Catering facilities and restaurants that offer various cuisines are available in Mumbai.
- Mumbai has good medical facilities as well as speciality hospitals.
- Shooting is possible only on Mondays when the club is closed. Generator vans are not allowed as the small arch bridge inside cannot take the load of the vans.

PERMISSION AND FEE DETAILS

AUTHORITY
City And Industrial Development Corporation (CIDCO)

CONTACT DETAILS
Executive Engineer (Engineering Department)
Site Office, Sector- 36, Near Taloja Jail, Kharghar
Navi Mumbai, Maharashtra – 410210
Mobile: +91-98193-20397
E-mail: chandresh.thakkar67@gmail.com
Web: www.cidco.Maharashtra.gov.in

FEE (INR)
Fee charged by the club is INR 50,000 per hole as there are altogether 11 holes. INR 1,00,000 is refundable deposit. Expenses in case there is use of club equipment are:

- Caddy – INR 200 for two hours
- Golf Bag – INR 500 for two hours
- Golf Cart – INR 500 for two hours
- Golf Cart With Driver – INR 1,000 for two hours

AUTHORITY
Golf Course Office

CONTACT DETAILS
Managing Director
Kharghar Golf Course, Kharghar
Navi Mumbai, Maharashtra – 410210
Tel: +91-86525-98595
Web: www.cidcogolfkharghar.golfgaga.com





MAHALAXMI RACECOURSE – MUMBAI’S DERBY GROUND

Built in 1883 CE (Common Era), the Royal Western India Turf Club Limited (RWITC) is one of the oldest and most acclaimed horse-racing clubs in the country. Rated among the best in Asia, the racecourse has been built on the lines of the famous Melbourne Caulfield Racecourse. The oval-shaped course, spread over an area of 225 acres, boasts of a track length of 2,400 metres.

Special lawns in the racecourse complex, with a capacity to accommodate 1,500-2,000 people, are often used to host parties, weddings and other events. The racecourse has British Raj style structures that date back to the 1880s. In the centre of the racecourse is a public garden that is maintained by the RWITC. The racecourse also has an upgraded jogging track which is actively used by the public in the mornings and evenings.



LOCATION FACT FILE

- RWITC is in Mumbai City district which has an average maximum temperature of 34 degree Celsius and a minimum of 18 degree Celsius.
- It is connected by rail (Mahalaxmi, 1 km; Mumbai Central, 2.2 km) and air (Mumbai, 22 km).
- Nearby attractions include Haji Ali, Worli Sea Face, Mahalaxmi Temple, Jijamata Udyan, etc.
- Several luxury, star and budget category hotels are available across Mumbai.
- There are ample catering facilities and restaurants offering multiple cuisines.
- Mumbai has good medical facilities as well as speciality hospitals.
- Mumbai being the hub of Indian cinema has ample support infrastructure in terms of pre- and post-production equipment, artistes, technicians, etc.
- Shooting on the race track is allowed only during the off-season.
- *Kaminey, Jodhaa Akbar, Bombay Race Course*, etc. are some of the films that have been shot here.

PERMISSION AND FEE DETAILS

AUTHORITY

Royal Western India Turf Club Ltd

CONTACT DETAILS

Secretary

Royal Western India Turf Club Ltd, Race Course

Mahalaxmi, Mumbai, Maharashtra – 400 034

Tel: +91-22-23072402/ 23071407/ 23053679

Telefax: +91-22-23090351

E-mail: secretary@rwitc.com

Web: www.rwitc.com

FEE (INR)

INR 5,00,000 per day + INR 1,00,000 as refundable deposit

Shooting is allowed only in the members' lawn which is maintained by the RWITC

AUTHORITY

Police Department

CONTACT DETAILS

Senior Police Inspector, Theatre Branch

Desk 10, Police Commissioner's Office, Dr D N Road

Fort, Opposite Crawford Market

Mumbai, Maharashtra – 400001

Tel: +91-22-22620111

Web: www.mumbaipolice.maharashtra.gov.in

FEE (INR)

Police protection charges as applicable, depending on the number of personnel deployed

